

ALARM
BYPASS
BATTERY
INVERTER



USER INTERFACE (ENLARGED VIEW)

NOTES:

1. INSTALLATION SHALL COMPLY WITH ALL APPLICABLE NATIONAL AND LOCAL ELECTRICAL REGULATIONS.
2. REFER TO PRODUCT DOCUMENTATION FOR ADDITIONAL DETAILS PRIOR TO INSTALLATION AND SITE PREPARATION WORK.
3. ALL DIMENSIONS ARE IN MILLIMETERS [INCHES].
4. NET WEIGHT OF THE UNIT WITHOUT BATTERIES IS: 60kW=311kg [685.6 lb] AND 80kW=339kg [747.3 lb].
NET WEIGHT OF 1 BATTERY CARTRIDGE IS 30kg [66 lb].
5. FRONT AND REAR CLEARANCE ARE FOR AIRFLOW AND SERVICE ACCESS.
CONSULT WITH THE LOCAL SAFETY CODES AND STANDARDS FOR ANY ADDITIONAL REQUIREMENTS OF LOCAL AREA.
6. COLOR: RAL 9003.
7. PROTECTION CLASS: IP20.
8. OPERATING TEMPERATURE: 0°C TO 40°C [32°F TO 104°F].

THIS DRAWING AND SPECIFICATIONS HEREIN ARE THE PROPERTY OF SCHNEIDER ELECTRIC AND SHALL NOT BE COPIED, REPRODUCED OR USED IN WHOLE OR IN PART, AS THE BASIS FOR THE MANUFACTURE OR SALE OF ITEMS WITHOUT WRITTEN PERMISSION FROM SCHNEIDER ELECTRIC. THIS DRAWING IS BASED UPON LATEST AVAILABLE INFORMATION AND IS SUBJECT TO CHANGE WITHOUT NOTICE.

Schneider Electric

TITLE:
EASY UPS 3M
60 - 80kVA, 400V, 3PH INPUT, 3PH OUTPUT
FOR/WITH INTERNAL BATTERIES
GENERAL ARRANGEMENT

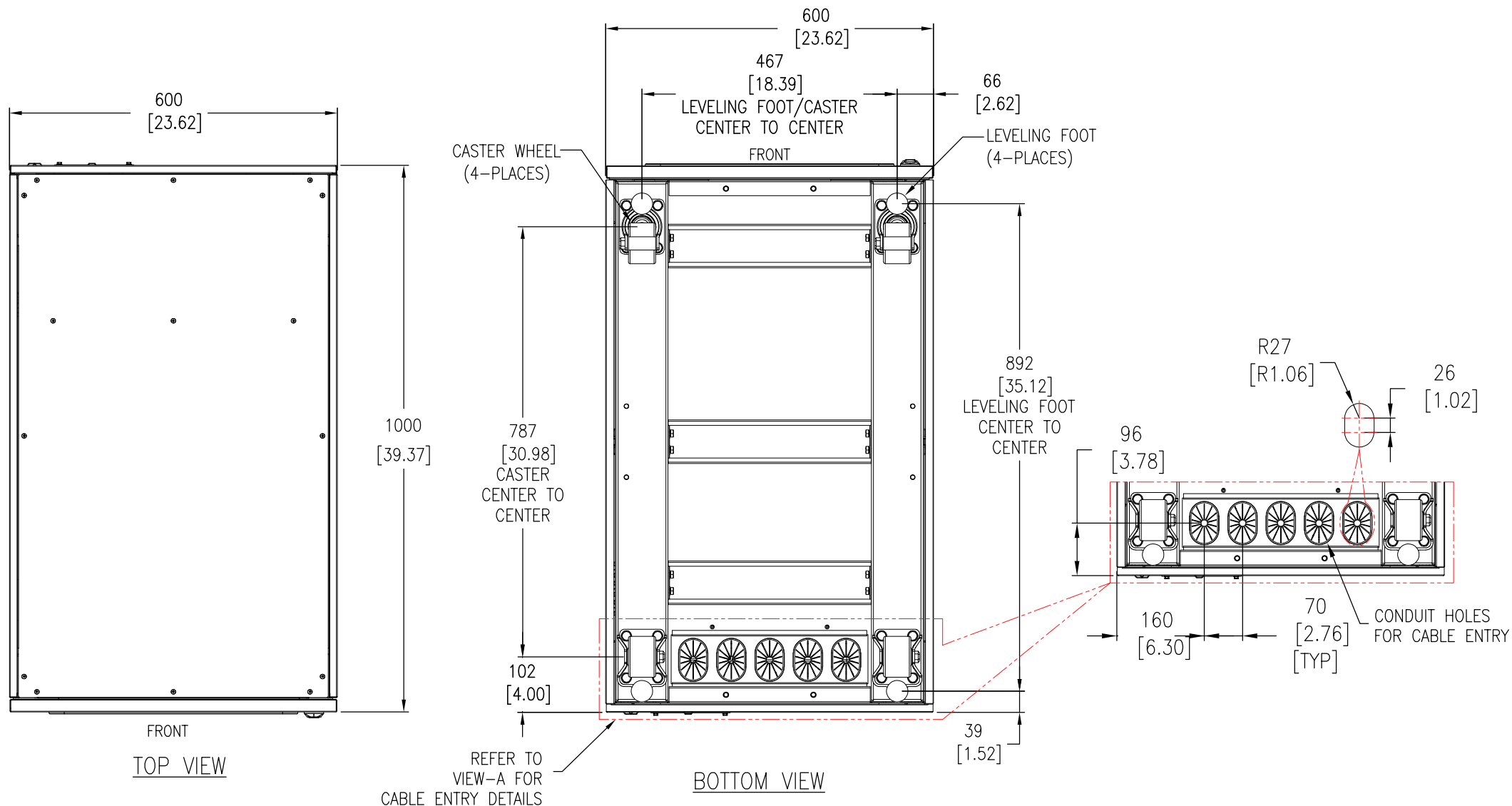
PROJECT: SUBMITTAL DRAWINGS SHEET 1 OF 7

DWG NO: E3MUPS60K80HB REV. 1
DRAWN: DIBYA/JAYAPRAKASH 10-JUN-24
ENGINEER: YANG YE 10-JUN-24
APPROVED: ERIC ZHANG 10-JUN-24
FIRST ANGLE PROJECTION

APPLICABLE SKUs & RUNTIME CHART

Sl.No.	SKU#	Runtime at PF=0.8 and 70% load in Minutes	Number of Battery Strings
1	E3MUPS60KHB	0	0
2	E3MUPS60KHB1	9.5	3
3	E3MUPS60KHB2	14	4
4	E3MUPS80KHB	0	0
5	E3MUPS80KHB1	9.4	4
6	E3MUPS80KHB2	15	6

1 String contains 4 Battery cartridges



- NOTES:**
- 1.INSTALLATION SHALL COMPLY WITH ALL APPLICABLE NATIONAL AND LOCAL ELECTRICAL REGULATIONS.
 - 2.REFER TO PRODUCT DOCUMENTATION FOR ADDITIONAL DETAILS PRIOR TO INSTALLATION AND SITE PREPARATION WORK.
 - 3.ALL DIMENSIONS ARE IN MILLIMETERS [INCHES].

THIS DRAWING AND SPECIFICATIONS HEREIN ARE THE PROPERTY OF SCHNEIDER ELECTRIC AND SHALL NOT BE COPIED, REPRODUCED OR USED IN WHOLE OR IN PART, AS THE BASIS FOR THE MANUFACTURE OR SALE OF ITEMS WITHOUT WRITTEN PERMISSION FROM SCHNEIDER ELECTRIC. THIS DRAWING IS BASED UPON LATEST AVAILABLE INFORMATION AND IS SUBJECT TO CHANGE WITHOUT NOTICE.

Schneider Electric

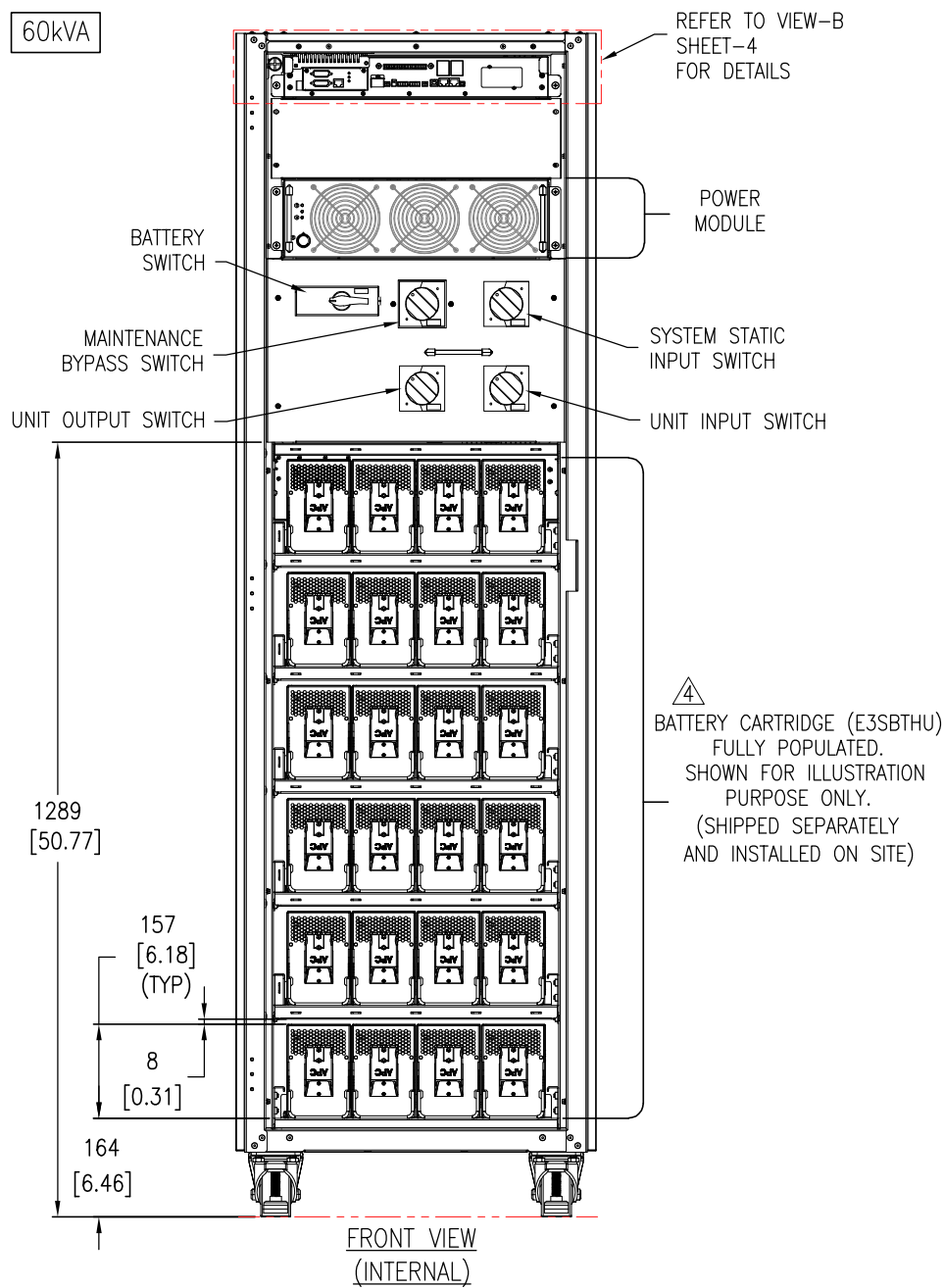
TITLE:
EASY UPS 3M
60 - 80kVA, 400V, 3PH INPUT, 3PH OUTPUT
FOR/WITH INTERNAL BATTERIES
TOP & BOTTOM VIEWS

PROJECT: SUBMITTAL DRAWINGS **SHEET 2 OF 7**

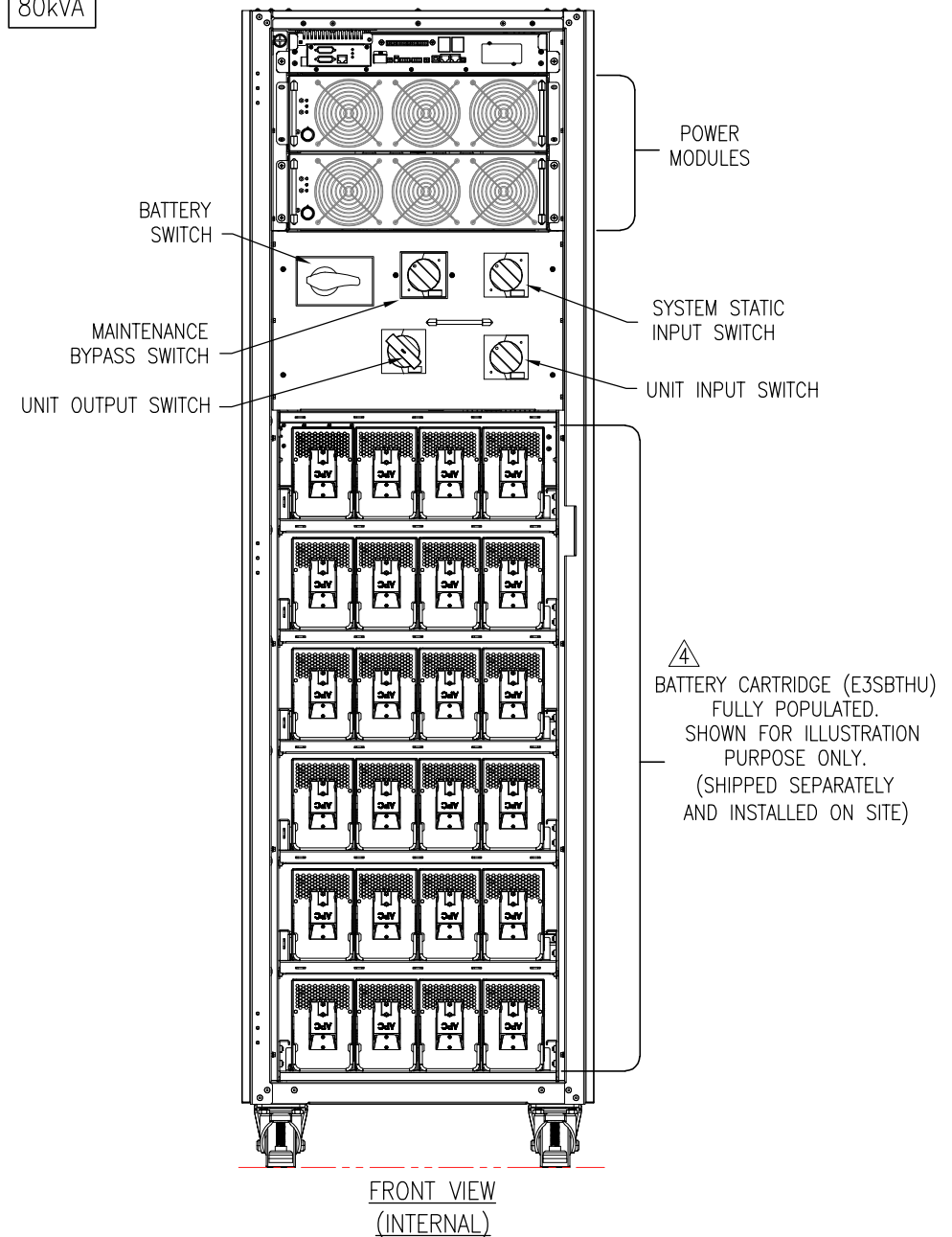
DWG NO: E3MUPS60K80HB **REV.** 1

DRAWN: DIBYA/JAYAPRAKASH	10-JUN-24	FIRST ANGLE PROJECTION
ENGINEER: YANG YE	10-JUN-24	
APPROVED: ERIC ZHANG	10-JUN-24	

60kVA



80kVA



NOTES:

1. INSTALLATION SHALL COMPLY WITH ALL APPLICABLE NATIONAL AND LOCAL ELECTRICAL REGULATIONS.
2. REFER TO PRODUCT DOCUMENTATION FOR ADDITIONAL DETAILS PRIOR TO INSTALLATION AND SITE PREPARATION WORK.
3. ALL DIMENSIONS ARE IN MILLIMETERS [INCHES].
- △ BATTERY CARTRIDGE (E3SBTHU) IS NOT PART OF THIS SKU.
INSTALL BATTERIES OF ONE STRING AT A TIME AND FROM BOTTOM TO TOP. ONE ROW IS A STRING.

THIS DRAWING AND SPECIFICATIONS HEREIN ARE THE PROPERTY OF SCHNEIDER ELECTRIC AND SHALL NOT BE COPIED, REPRODUCED OR USED IN WHOLE OR IN PART, AS THE BASIS FOR THE MANUFACTURE OR SALE OF ITEMS WITHOUT WRITTEN PERMISSION FROM SCHNEIDER ELECTRIC. THIS DRAWING IS BASED UPON LATEST AVAILABLE INFORMATION AND IS SUBJECT TO CHANGE WITHOUT NOTICE.

**Schneider
Electric**

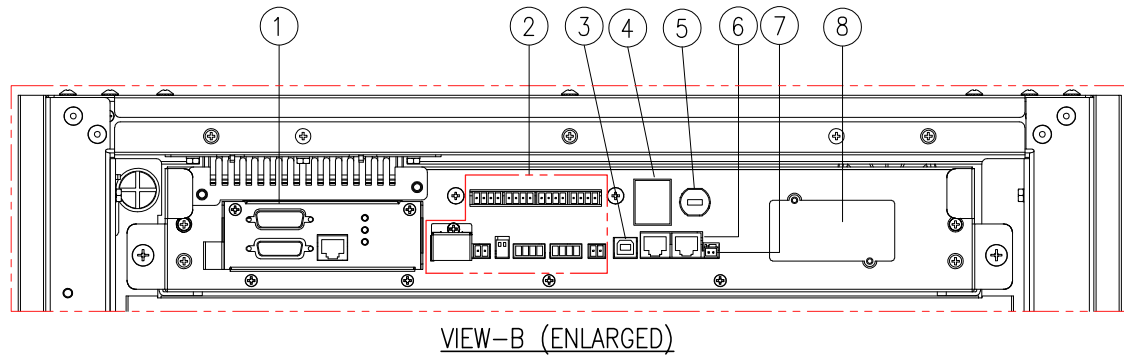
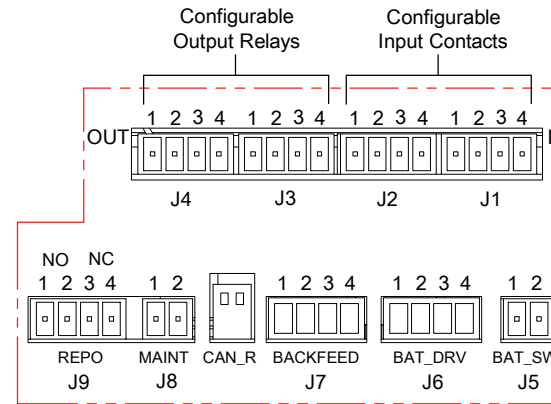
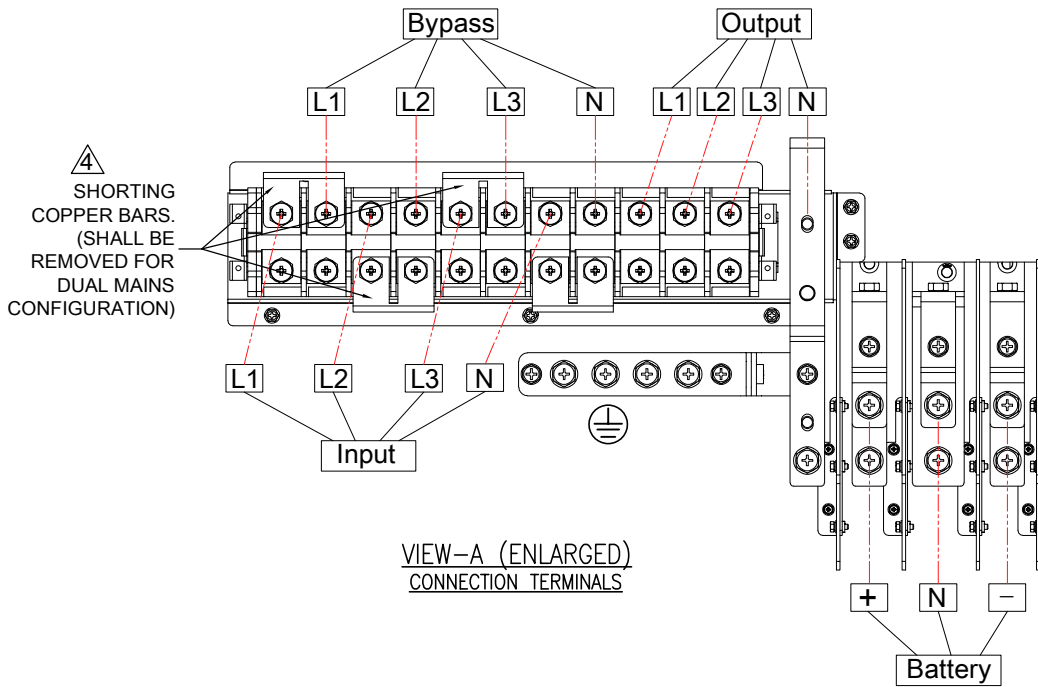
TITLE:
EASY UPS 3M
60 - 80kVA, 400V, 3PH INPUT, 3PH OUTPUT
FOR/WITH INTERNAL BATTERIES
INTERNAL VIEWS (FRONT)

PROJECT: SUBMITTAL DRAWINGS SHEET 3 OF 7

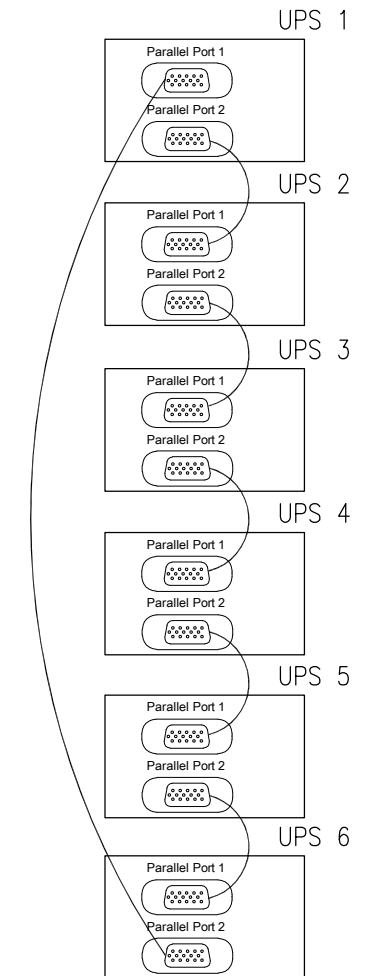
DWG NO: E3MUPS60K80HB

DRAWN: DIBYA/JAYAPRAKASH	10-JUN-24
ENGINEER: YANG YE	10-JUN-24
APPROVED: ERIC ZHANG	10-JUN-24

REV. 1
FIRST
ANGLE
PROJECTION



- ① PARALLEL PORT
- ② INPUT CONTACTS AND OUTPUT RELAYS
REFER TO VIEW-C FOR DETAILS
- ③ USB PORT (FOR SERVICE)
- ④ EPO
- ⑤ SLOT FOR BATTERY COLD START BUTTON (OPTIONAL)
- ⑥ RS485
- ⑦ BATTERY TEMP. SENSOR TERMINAL
- ⑧ SLOT FOR SNMP



PARALLEL CONNECTION

VERIFY THE SETTINGS OF CAN_R

- FOR PARALLEL SYSTEMS WITH LESS THAN 4 PARALLEL UPSs, CAN_R OF ALL UPSs MUST BE IN ON POSITION.
- FOR PARALLEL SYSTEMS WITH MORE THAN 5 PARALLEL UPSs, CAN_R OF ALL UPSs MUST BE IN OFF POSITION.

NOTES:

1. INSTALLATION SHALL COMPLY WITH ALL APPLICABLE NATIONAL AND LOCAL ELECTRICAL REGULATIONS.
2. REFER TO PRODUCT DOCUMENTATION FOR ADDITIONAL DETAILS PRIOR TO INSTALLATION AND SITE PREPARATION WORK.
3. ALL DIMENSIONS ARE IN MILLIMETERS [INCHES].
- ④ FOR DUAL MAINS CONFIGURATION REMOVE THE SHORTING CABLE.
5. UP TO 6 NUMBERS OF UPS CAN BE CONNECTED IN PARALLEL. MAXIMUM COMMUNICATION CABLE LENGTH IS 5 Meters.

THIS DRAWING AND SPECIFICATIONS HEREIN ARE THE PROPERTY OF SCHNEIDER ELECTRIC AND SHALL NOT BE COPIED, REPRODUCED OR USED IN WHOLE OR IN PART, AS THE BASIS FOR THE MANUFACTURE OR SALE OF ITEMS WITHOUT WRITTEN PERMISSION FROM SCHNEIDER ELECTRIC. THIS DRAWING IS BASED UPON LATEST AVAILABLE INFORMATION AND IS SUBJECT TO CHANGE WITHOUT NOTICE.

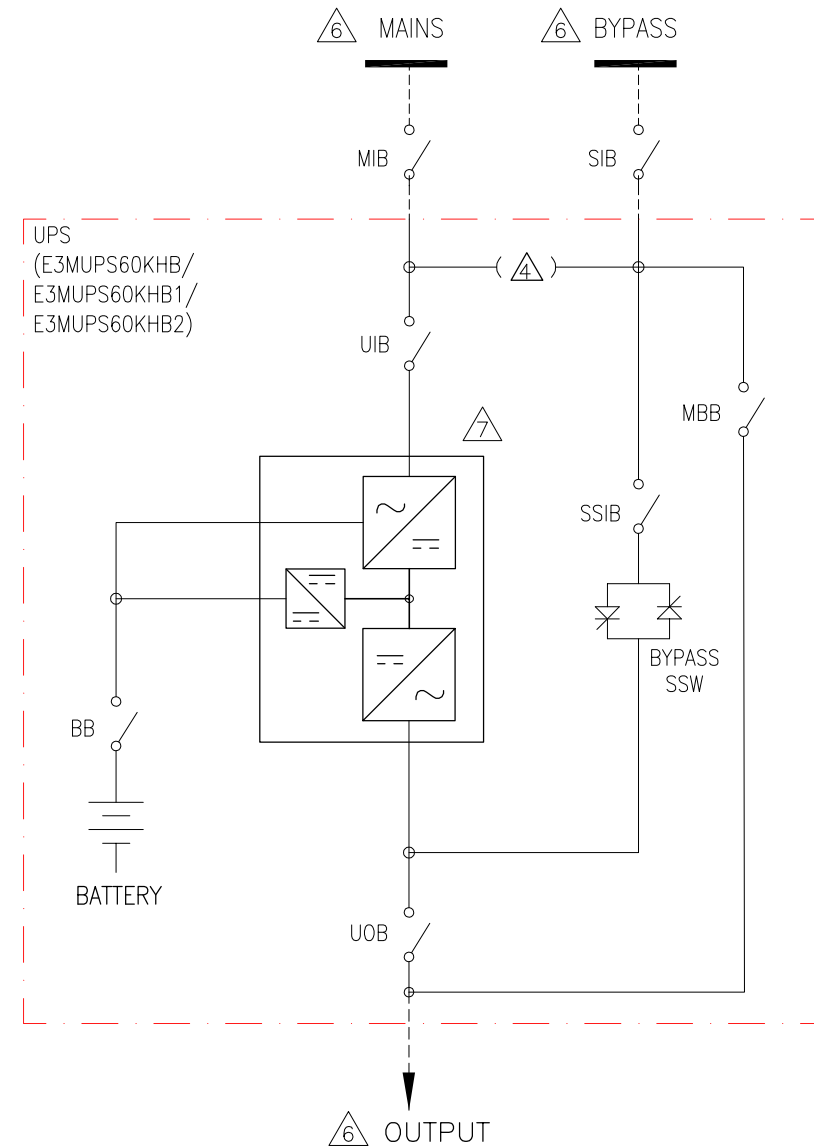
Schneider Electric

TITLE:
EASY UPS 3M
60 - 80kVA, 400V, 3PH INPUT, 3PH OUTPUT
FOR/WITH INTERNAL BATTERIES
DETAILS/ENLARGED VIEWS

PROJECT: SUBMITTAL DRAWINGS SHEET 4 OF 7

DWG NO: E3MUPS60K80HB REV. 1
DRAWN: DIBYA/JAYAPRAKASH 10-JUN-24 FIRST ANGLE PROJECTION
ENGINEER: YANG YE 10-JUN-24
APPROVED: ERIC ZHANG 10-JUN-24

DUAL MAINS CONFIGURATION, 60kVA



----- CABLE PROVIDED BY OTHERS

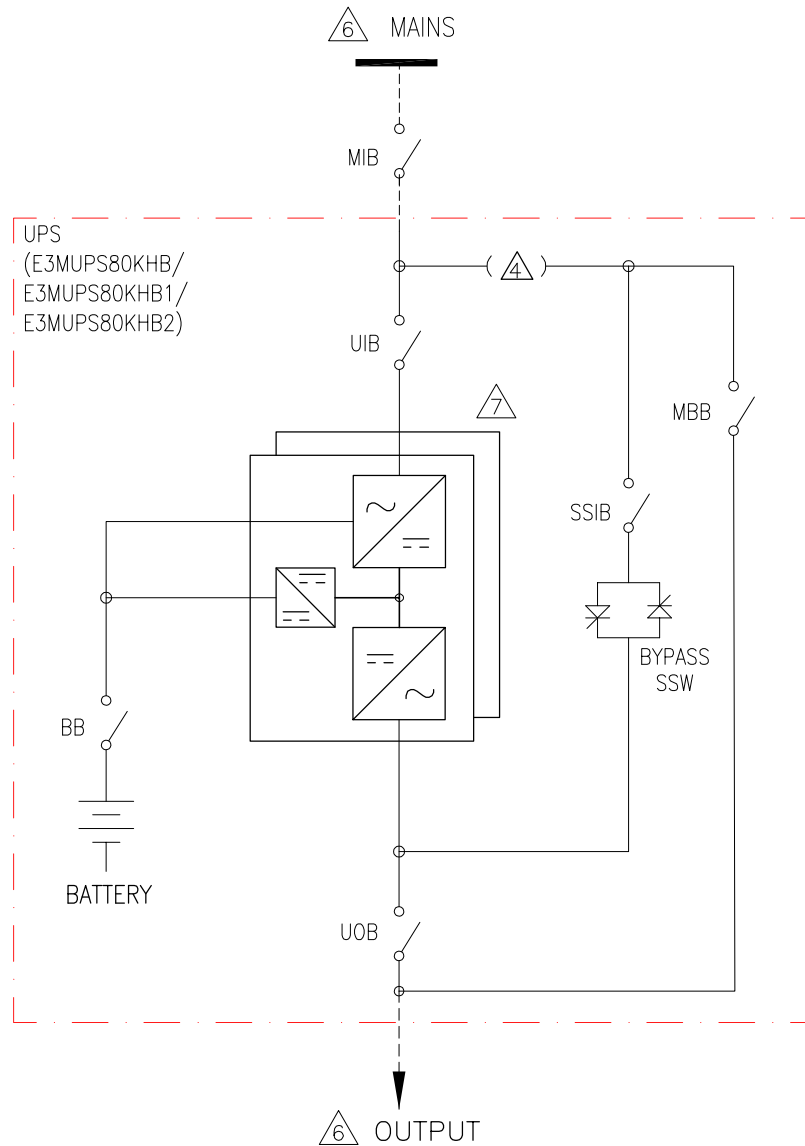


PROJECT: SUBMITTAL DRAWINGS SHEET 5 OF 7

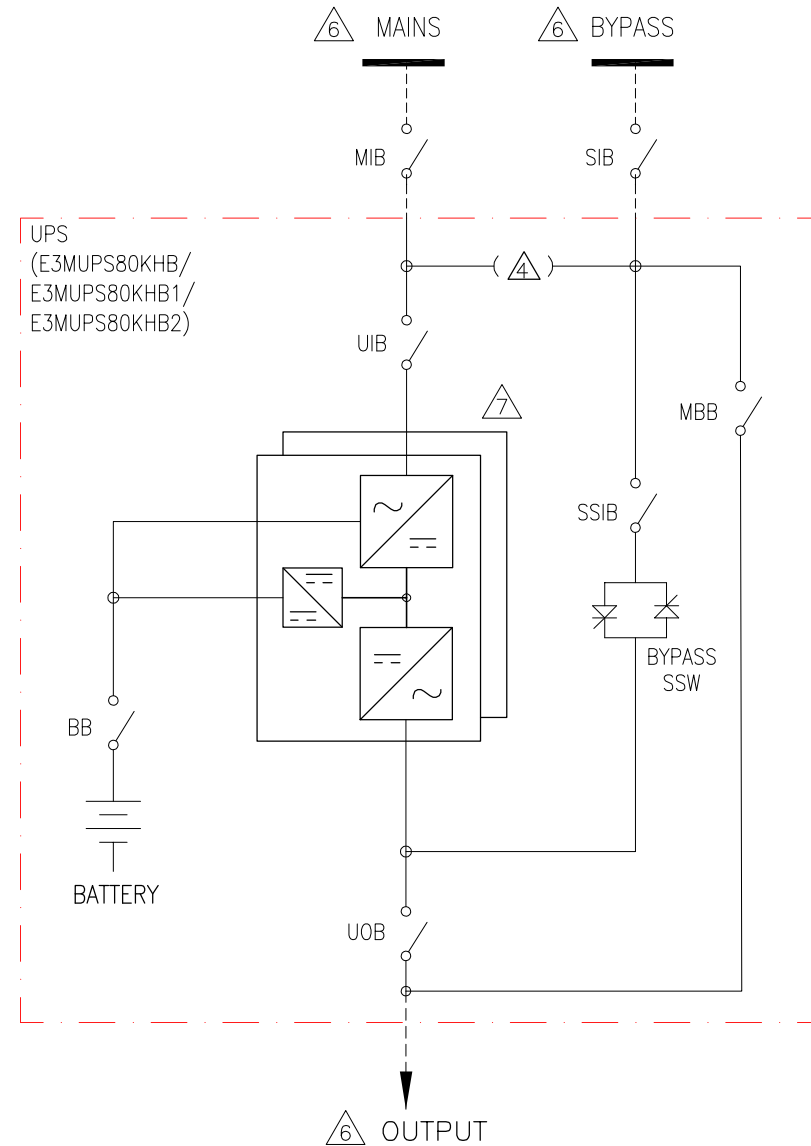
7 | APPROVED:ERIC ZHANG/PATRICK B | 20-OCT-21

PROJECT

SINGLE MAINS CONFIGURATION, 80kVA



DUAL MAINS CONFIGURATION, 80kVA



LEGEND:

----- CABLE PROVIDED BY OTHERS

NOTES:

1. INSTALLATION SHALL COMPLY WITH ALL APPLICABLE NATIONAL AND LOCAL ELECTRICAL REGULATIONS.
2. REFER TO PRODUCT DOCUMENTATION FOR ADDITIONAL DETAILS PRIOR TO INSTALLATION AND SITE PREPARATION WORK
3. DRAWING DEPICTS POWER SYSTEM CONNECTIONS AND NOT IS NOT REPRESENTATIVE OF PHYSICAL LAYOUT.
- △ SINGLE MAINS CONFIGURATION IS DEFAULT.
FOR DUAL MAINS CONFIGURATION REMOVE THE 3 SHORTING COPPER BARS.
5. UP TO 6 UPS CAN BE CONNECTED IN PARALLEL.
- △ REFER TO SHEET-7 FOR ELECTRICAL DATA.
- △ 2xPOWER MODULES RATED AT 40KVA. NOT SCALABLE BUT INTERNAL REDUNDANCY IS POSSIBLE DEPENDING UPON THE LOAD REQUIREMENT.
8. CABLE LUGS ARE PROVIDED BY OTHERS.

THIS DRAWING AND SPECIFICATIONS HEREIN ARE THE PROPERTY OF SCHNEIDER ELECTRIC AND SHALL NOT BE COPIED, REPRODUCED OR USED IN WHOLE OR IN PART, AS THE BASIS FOR THE MANUFACTURE OR SALE OF ITEMS WITHOUT WRITTEN PERMISSION FROM SCHNEIDER ELECTRIC. THIS DRAWING IS BASED UPON LATEST AVAILABLE INFORMATION AND IS SUBJECT TO CHANGE WITHOUT NOTICE.

Schneider Electric

TITLE:
EASY UPS 3M
80KVA, 400V, 3PH INPUT, 3PH OUTPUT
FOR/WITH INTERNAL BATTERIES
SYSTEM ONLINE DIAGRAM

PROJECT: SUBMITTAL DRAWINGS SHEET 6 OF 7

DWG NO: E3MUPS60K80HB

DRAWN: JAYAPRAKASH 20-OCT-21
ENGINEER: YANG YE 20-OCT-21

APPROVED: ERIC ZHANG/PATRICK B 20-OCT-21

REV. 1

FIRST ANGLE PROJECTION

ELECTRICAL DATA SHEET		
UPS RATING	60kVA	80kVA
INPUT SPECIFICATIONS		
INPUT WIRING	3W+N+PE	
INPUT VOLTAGE (V)	380/400/415	
NOMINAL INPUT CURRENT (A)	96/91/88	128/122/117
MAXIMUM INPUT CURRENT (A)	109/104/100	154/146/141
INPUT CURRENT LIMITATION (A)	155	206
INPUT FREQUENCY (Hz)	40 - 70	
INPUT POWER FACTOR	>0.99	>0.99
MAXIMUM SHORT CIRCUIT RATING	10kA RMS	
PROTECTION	FUSE	
RAMP-IN (SECONDS)	7	
TOTAL HARMONIC DISTORTION (THDI)	< 3% FOR LINEAR LOADS	
BYPASS SPECIFICATIONS		
BYPASS WIRING	3W+N+PE	
BYPASS VOLTAGE (V)	380/400/415	
OVERLOAD CAPACITY	110% FOR 60 MINUTES	
	130% FOR 10 MINUTES	
	130-150% FOR 1 MINUTE	
	266/280/291	
MAXIMUM BYPASS VOLTAGE (V)	475/480/477	
NOMINAL BYPASS CURRENT (A)	91/87/83	122/115/111
BYPASS FREQUENCY (Hz)	50/60	
MAXIMUM SHORTCIRCUIT RATING	10kA RMS	
OUTPUT SPECIFICATIONS		
OUTPUT WIRING	3W+N+PE	
OUTPUT VOLTAGE (V)	380/400/415	
OVERLOAD CAPACITY AT 30°C	110% FOR 60 MINUTES	
	125% FOR 10 MINUTES	
	150% FOR 1 MINUTE	
NOMINAL OUTPUT CURRENT (A)	91/87/83	122/115/111
OUTPUT FREQUENCY (Hz)	50/60	
OUTPUT POWER FACTOR	1	
TOTAL HARMONIC DISTORTION (THDU)	<3%@ 100% LINEAR LOAD, < 5%@ 100% NON-LINEAR LOAD	
DYNAMIC LOAD RESPONSE (milliseconds)	20	
BATTERY SPECIFICATIONS		
CHARGING POWER IN % OF OUTPUT POWER	1-16%	1-24%
MAXIMUM CHARGING POWER (W)	9600	19200
NOMINAL BATTERY VOLTAGE (40 Blocks) (VDC)	±240	
NOMINAL FLOAT VOLTAGE (40 Blocks) (VDC)	±270	
END OF DISCHARGE VOLTAGE (40 Blocks) (VDC)	±192	
BATTERY CURRENT AT FULL LOAD AND NOMINAL BATTERY VOLTAGE (A)	133	176
BATTERY CURRENT AT FULL LOAD AND MINIMUM BATTERY VOLTAGE (A)	166	222
TEMPERATURE COMPENSATION (PER CELL)	PROGRAMMABLE FROM 0-7mV. DEFAULT IS 0mV	
RIPPLE CURRENT	<5% C10	

RECOMMENDED CABLE SIZES 60kVA UPS			
	CABLE SIZE PER PHASE (mm ²)	NEUTRAL CABLE SIZE* (mm ²)	PE CABLE SIZE (mm ²)
INPUT	35	2X25	16
BYPASS	25	2X25	16
OUTPUT	25	2X25	16
BATTERY	50	50	25

RECOMMENDED CABLE SIZES 80kVA UPS			
	CABLE SIZE PER PHASE (mm ²)	NEUTRAL CABLE SIZE* (mm ²)	PE CABLE SIZE (mm ²)
INPUT	50	2X50	25
BYPASS	50	2X50	25
OUTPUT	50	2X50	25
BATTERY	2x50	2X50	50

* NEUTRAL CONDUCTOR IS SIZED TO HANDLE 1.73 TIMES PHASE CURRENT IN CASE OF HIGH HARMONIC CONTENT FROM NON-LINEAR LOADS. IF NON OR LESS HORMONIC CURRENT ARE EXPECTED, NEUTRAL CONDUCTOR CAN BE SIZED ACCORDINGLY BUT NOT LESS THAN THE PHASE CONDUCTOR.

NOTES:
1.INSTALLATION SHALL COMPLY WITH ALL APPLICABLE NATIONAL AND LOCAL ELECTRICAL REGULATIONS.
2.REFER TO PRODUCT DOCUMENTATION FOR ADDITIONAL DETAILS PRIOR TO INSTALLATION AND SITE PREPARATION WORK.

THIS DRAWING AND SPECIFICATIONS HEREIN ARE THE PROPERTY OF SCHNEIDER ELECTRIC AND SHALL NOT BE COPIED, REPRODUCED OR USED IN WHOLE OR IN PART, AS THE BASIS FOR THE MANUFACTURE OR SALE OF ITEMS WITHOUT WRITTEN PERMISSION FROM SCHNEIDER ELECTRIC. THIS DRAWING IS BASED UPON LATEST AVAILABLE INFORMATION AND IS SUBJECT TO CHANGE WITHOUT NOTICE.



TITLE:
EASY UPS 3M
60 – 80kVA, 400V, 3PH INPUT, 3PH OUTPUT
FOR/WITH INTERNAL BATTERIES
ELECTRICAL DATA SHEET
PROJECT: SUBMITTAL DRAWINGS | SHEET 7 OF 7

DWG NO: E3MUPS60K80HB
DRAWN: JAYAPRAKASH
ENGINEER: YANG YE
APPROVED: ERIC ZHANG

REV.
30–AUG–19
18–OCT–19
18–OCT–19
FIRST ANGLE PROJECTION